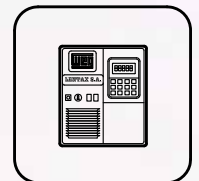
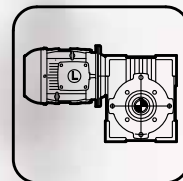
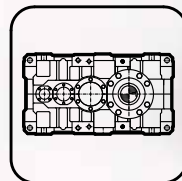
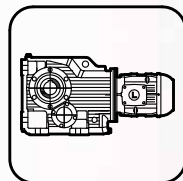
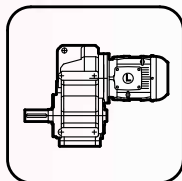
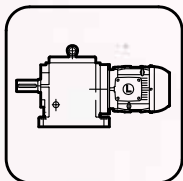
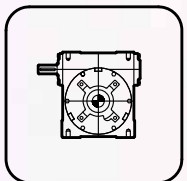


REDUCTORES INDUSTRIALES



POTENCIAS MECANICAS (kW) Y RELACIONES NOMINALES
POWER RATING (kW) AND NOMINAL RATIO

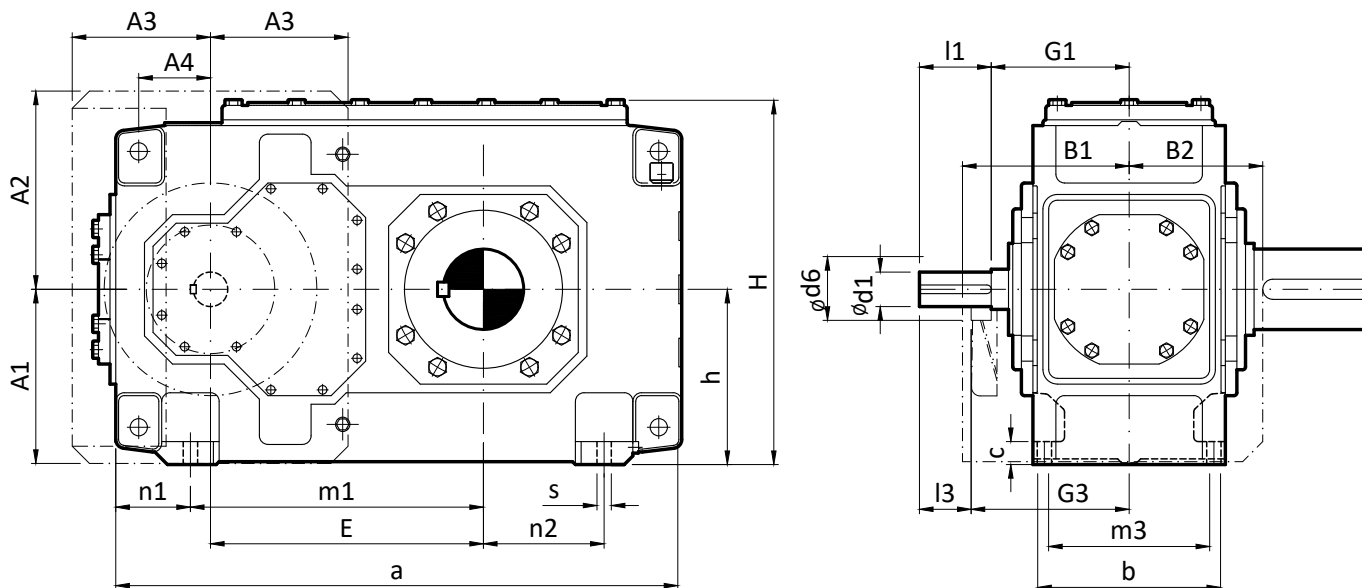
Doble Reducción -Ejes Paralelos
 Double Reduction - Helical Gear Units

Relaciones Nominales Nominal Ratio	n1 (r.p.m.)	Modelo Model					
		DPB 280	DPB 320	DPB 360	DPB 400	DPB 450	DPB 500
		H2 08	H2-10	H2-11	H2-13	H2-15	H2-17
6,3	1800	---	---	---	---	4285	---
	1500	---	---	---	---	3571	5034
	1200	---	---	---	---	2857	4027
	1000	---	---	---	---	2381	3356
7,1	1800	---	---	1607	2330	3827	---
	1500	---	---	1339	1942	3189	4454
	1200	---	---	1071	1553	2551	3563
	1000	---	---	893	1295	2126	2969
8	1800	---	---	1427	2070	3404	4810
	1500	---	---	1189	1725	2837	4009
	1200	---	---	951	1380	2270	3207
	1000	---	---	793	1150	1891	2672
9	1800	552	931	1262	1831	3145	4320
	1500	460	776	1052	1526	2621	3600
	1200	368	621	842	1221	2097	2880
	1000	306	517	701	1017	1747	2400
10	1800	493	824	1111	1611	2778	3848
	1500	411	686	926	1343	2315	3207
	1200	328	549	741	1074	1852	2566
	1000	274	458	617	895	1543	2138
11,2	1800	456	741	990	1479	2480	3449
	1500	380	618	825	1232	2067	2874
	1200	304	494	660	986	1654	2299
	1000	253	412	550	822	1378	1916
12,5	1800	405	666	905	1313	2210	3047
	1500	337	555	754	1094	1841	2539
	1200	270	444	603	875	1473	2031
	1000	225	370	503	729	1228	1693
14	1800	358	581	800	1144	1941	2749
	1500	298	485	666	954	1617	2291
	1200	238	388	533	763	1294	1833
	1000	199	323	444	636	1078	1527
16	1800	319	532	704	1038	1761	2304
	1500	266	443	586	865	1467	1920
	1200	213	354	469	692	1174	1536
	1000	177	295	391	577	978	1280
18	1800	277	465	622	915	1571	2176
	1500	231	387	518	763	1309	1813
	1200	185	310	415	610	1047	1451
	1000	154	258	346	509	873	1209
20	1800	253	407	567	819	1389	2037
	1500	211	339	473	683	1158	1698
	1200	169	271	378	546	926	1358
	1000	141	226	315	455	772	1132
22,4	1800	227	377	505	740	---	---
	1500	189	314	421	617	---	---
	1200	151	251	337	493	---	---
	1000	126	209	281	411	---	---
25	1800	202	335	---	---	---	---
	1500	169	279	---	---	---	---
	1200	135	224	---	---	---	---
	1000	112	186	---	---	---	---
28	1800	177	297	---	---	---	---
	1500	147	247	---	---	---	---
	1200	118	198	---	---	---	---
	1000	98	165	---	---	---	---

REDUCTORES INDUSTRIALES

INDUSTRIAL GEAR UNITS

TABLA DE MEDIDAS - SERIE DPB
OVERALL DIMENSIONS - DPB SERIES

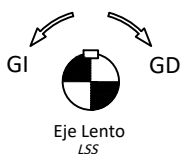
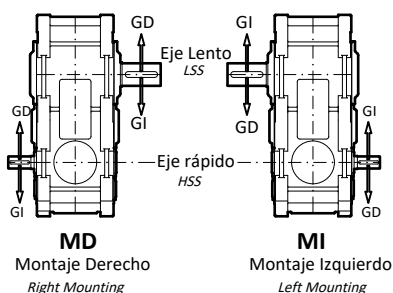


Modelo Model	$\phi d1$ m6	l1	l3	$\phi d1$ m6	l1	l3	G1	G3
DPB 280	iN=8.....14			iN=16.....28			210	240
	60	135	105	50	110	80		
DPB 320	iN=8.....14			iN=16.....28			240	270
	75	140	110	60	140	110		
DPB 360	iN=6.3.....11.2			iN=12.5.....22.4			275	310
	90	165	130	70	140	105		

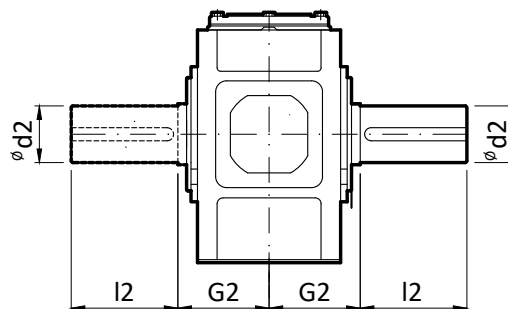
Modelo Model	d2 n6	l2	G2	E	a	A1	A2	A3	A4	b	B1	B2
DPB 280	130	250	195	430	890	272	305	210	70	300	255	205
DPB 320	160	300	235	500	1025	312	355	240	100	370	285	240
DPB 360	170	300	270	545	1105	372	420	285	135	430	325	280

Modelo Model	c	d6	h_{-1}^0	H	m1	m3	n1	n2	s	Peso Weight (Kg)	Aceite Oil (lts)
DPB 280	35	200	280	582	650	260	120	190	24	590	30
DPB 320	40	200	320	662	735	320	145	205	28	960	45
DPB 360	50	210	380	782	775	370	165	180	35	1335	71

Configuración Setting



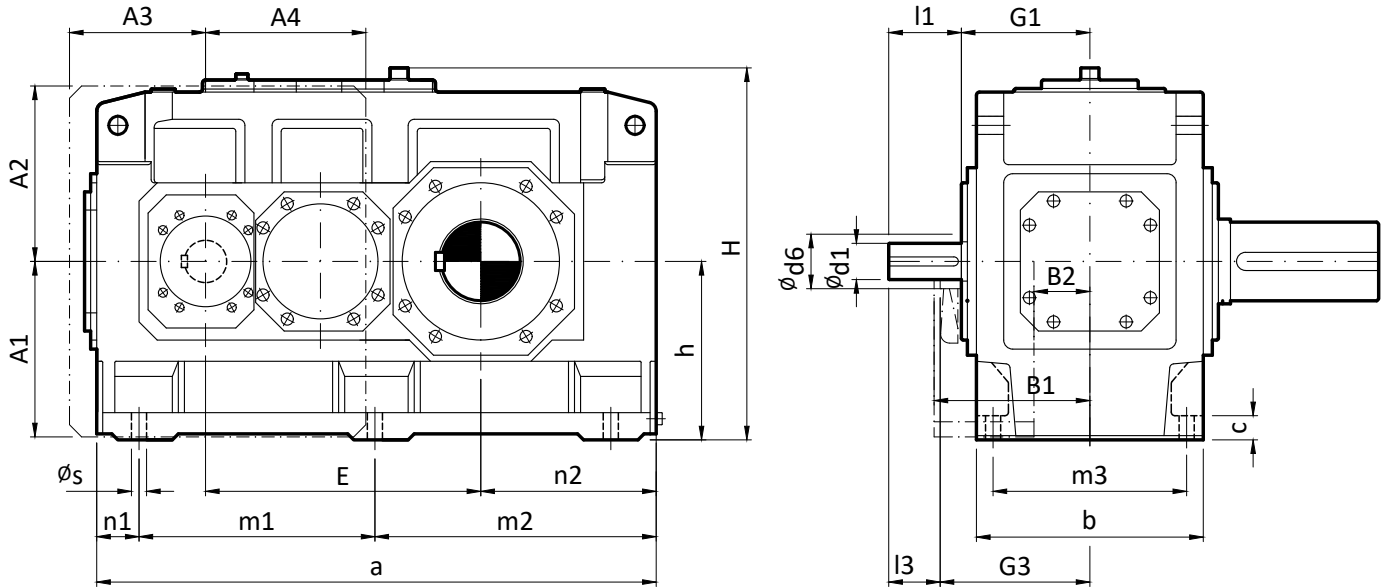
GD : Giro Horario
GD : Clockwise Rotation
GD : Giro Antihorario
GD : Counterclockwise Rotation



REDUCTORES INDUSTRIALES

INDUSTRIAL GEAR UNITS

TABLA DE MEDIDAS - SERIE DPB
OVERALL DIMENSIONS - DPB SERIES

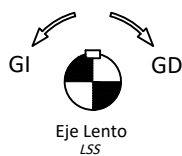
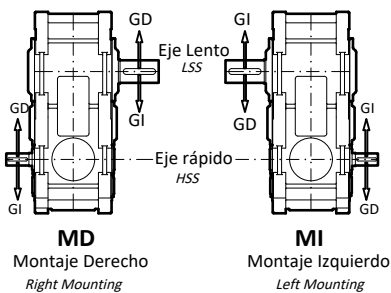


Modelo Model	ød1 m6	l1	l3	ød1 m6	l1	l3	G1	G3
DPB 400	iN=6.3.....11.2			iN=12.5.....20			330	365
	100	205	170	85	170	135		
DPB 450	iN=6.3.....11.2			iN=12.5.....20			365	410
	120	210	165	100	210	165		
DPB 500	iN=6.3.....11.2			iN=12.5.....20			420	465
	125	245	200	110	210	165		

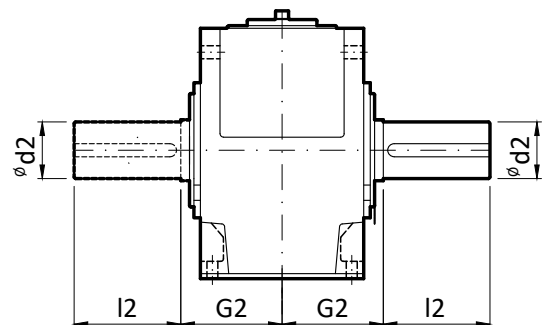
Modelo Model	d2 n6	l2	G2	E	a	A1	A2	A3	A4	b	B1	B2	c
DPB 400	200	350	335	635	1290	430	460	330	365	550	385	135	60
DPB 450	230	410	380	762	1550	490	500	370	440	625	430	155	70
DPB 500	250	410	415	860	1740	540	565	435	505	690	485	140	80

Modelo Model	d6	h ₋₁ ⁰	H	m1	m2	m3	n1	n2	s	Peso Weight (Kg)	Aceite Oil (lts)
DPB 400	250	440	900	545	545	475	100	305	35	2000	135
DPB 450	280	500	1000	655	655	535	120	365	42	3430	210
DPB 500	280	550	1110	735	735	600	135	390	42	4650	290

Configuración Setting



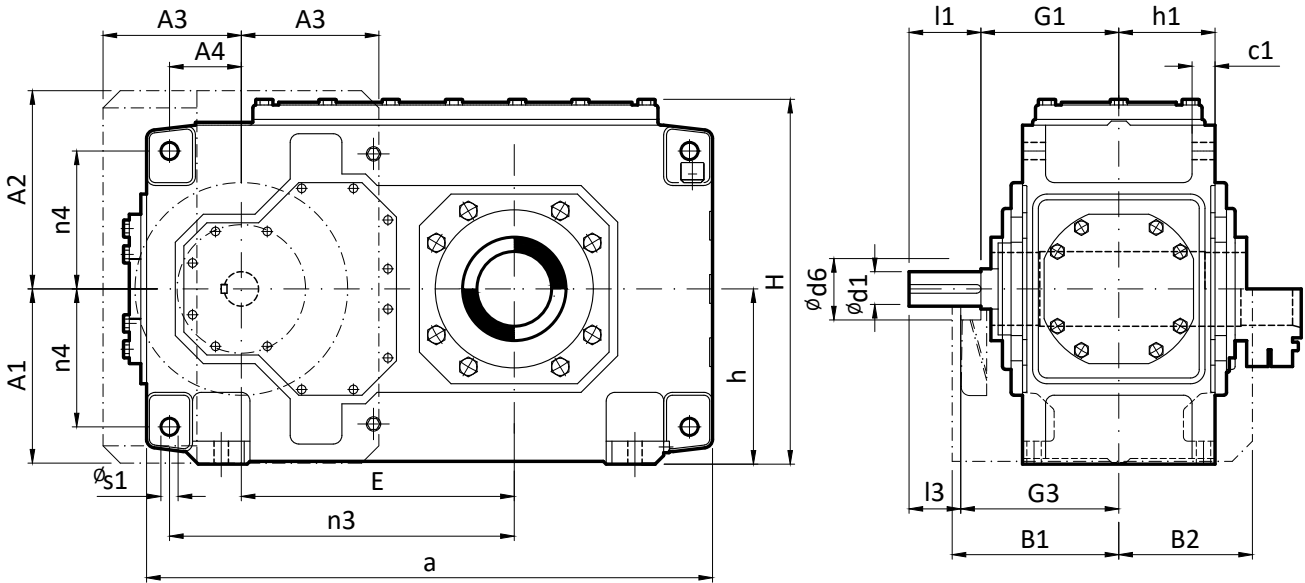
GI : Giro Horario
GD : Clockwise Rotation
GD : Giro Antihorario
GI : Counterclockwise Rotation



REDUCTORES INDUSTRIALES

INDUSTRIAL GEAR UNITS

TABLA DE MEDIDAS - SERIE DPB-Hu
 OVERALL DIMENSIONS - DPB-Hu SERIES

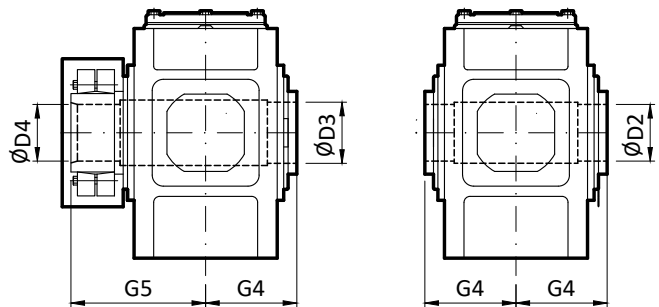
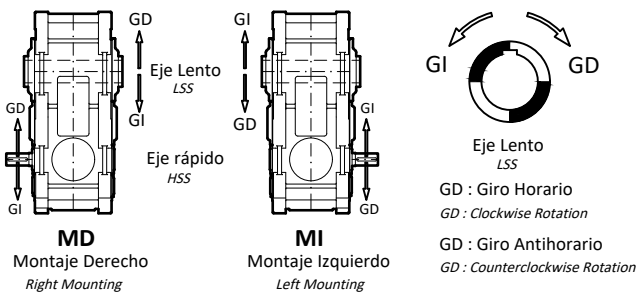


Modelo Model	$\varnothing d1$ m6	l1	l3	$\varnothing d1$ m6	l1	l3	G1	G3
DPB 280	iN=8.....14			iN=16.....28			210	240
	60	135	105	50	110	80		
DPB 320	iN=8.....14			iN=16.....28			240	270
	75	140	110	60	140	110		
DPB 360	iN=6.3.....11.2			iN=12.5.....22.4			275	310
	90	165	130	70	140	105		

Modelo Model	D2 H7	D3 H7	D4 H7	G4	G5	E	a	A1	A2	A3	A4	B1
DPB 280	125	130	130	195	285	430	890	272	305	210	70	255
DPB 320	150	155	150	235	350	500	1025	312	355	240	100	285
DPB 360	165	170	165	270	400	545	1105	372	420	285	135	325

Modelo Model	B2	c1	d6	h_{-1}^0	h1	H	n3	n4	s1 H9	Peso Weight (Kg)	Aceite Oil (lts)
DPB 280	205	36	200	280	150	582	545	215	28	590	30
DPB 320	240	45	200	320	185	662	635	245	36	960	45
DPB 360	280	54	210	380	215	782	710	300	40	1335	71

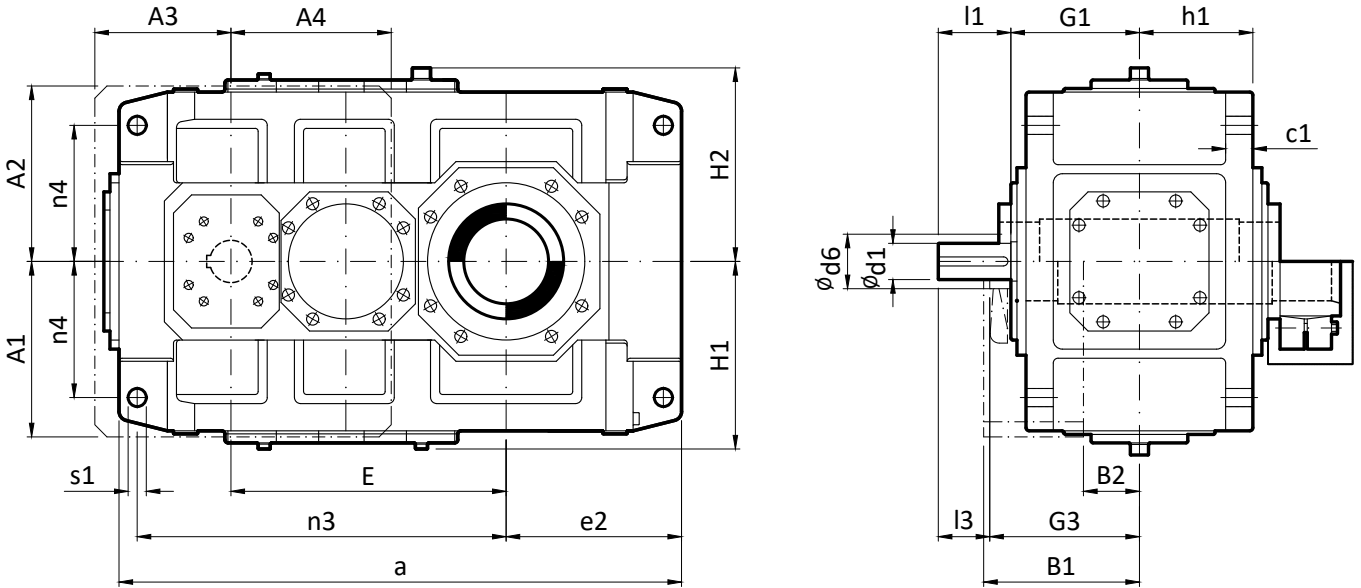
Configuración Setting



REDUCTORES INDUSTRIALES

INDUSTRIAL GEAR UNITS

TABLA DE MEDIDAS - SERIE DPB-Hu
OVERALL DIMENSIONS - DPB-Hu SERIES

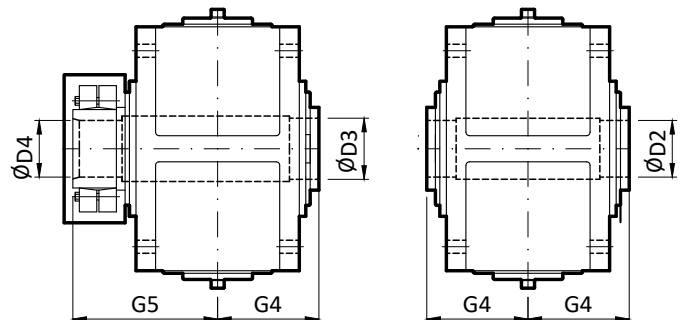
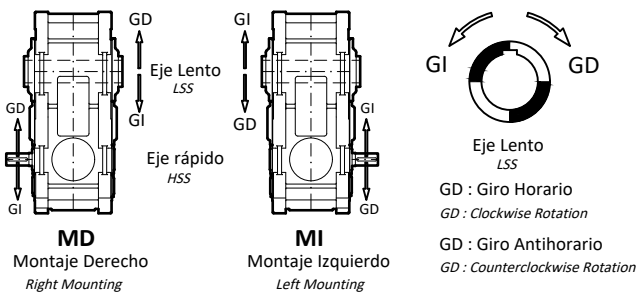


Modelo Model	Ød1 m6	l1	l3	Ød1 m6	l1	l3	G1	G3
DPB 400	iN=6.3.....11.2			iN=12.5.....20			330	365
	100	205	170	85	170	135		
DPB 450	iN=6.3.....11.2			iN=12.5.....20			365	410
	120	210	165	100	210	165		
DPB 500	iN=6.3.....11.2			iN=12.5.....20			420	465
	125	245	200	110	210	165		

Modelo Model	D2 H7	D3 H7	D4 H7	G4	G5	E	a	A1	A2	A3	A4	B1	B2
DPB 400	190	195	190	335	480	635	1290	430	460	330	365	385	135
DPB 450	230	235	230	380	550	762	1550	490	500	370	440	430	155
DPB 500	250	260	250	415	600	860	1740	540	565	435	505	485	140

Modelo Model	c1	d6	e2	h1	H1	H2	n3	n4	s1 H9	Peso Weight (Kg)	Aceite Oil (lts)
DPB 400	61±2	250	405	272.5	450	460	835	340	48	1880	110
DPB 450	72±2	280	485	310	490	500	1005	375	55	3240	160
DPB 500	81±2	280	525	340	555	560	1145	425	55	4420	230

Configuración Setting



POTENCIAS MECANICAS (kW) Y RELACIONES NOMINALES
POWER RATING (kW) AND NOMINAL RATIO

Triple Reducción -Ejes Paralelos

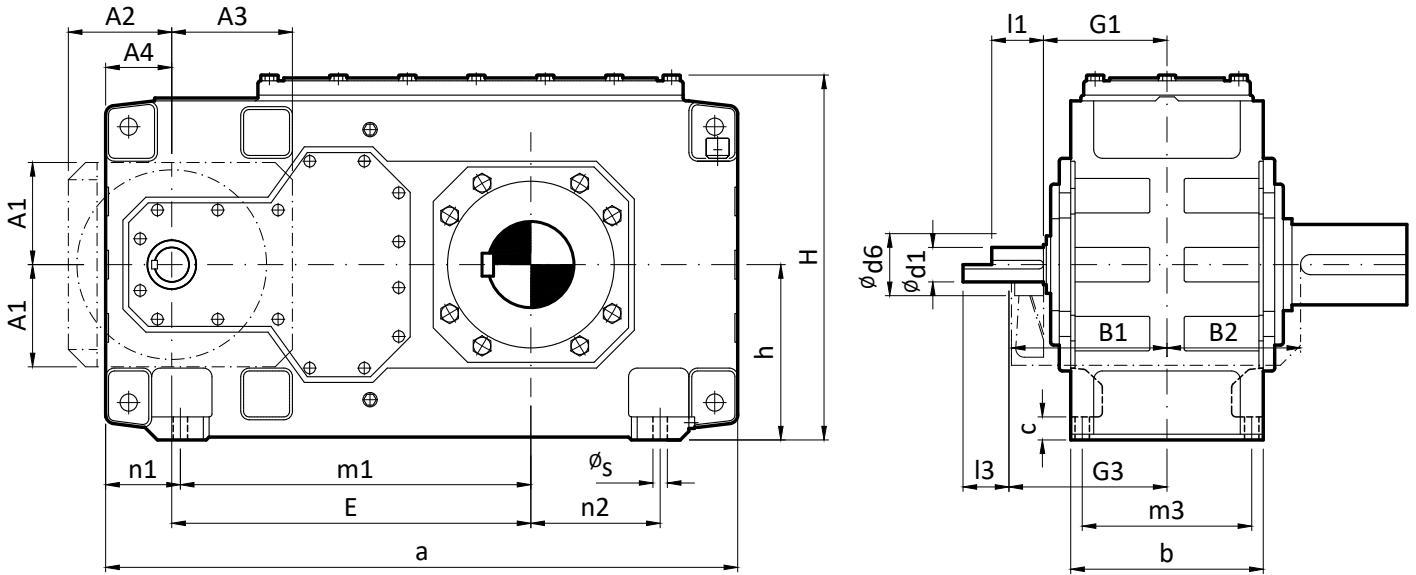
Triple Reduction - Helical Gear Units

Relaciones Nominales Nominal Ratio	n1 (r.p.m.)	Modelo					
		Model					
		TPB 280	TPB 320	TPB 360	TPB 400	TPB 450	TPB 500
		H3 08	H3-10	H3-11	H3-13	H3-15	H3-17
22,4	1800	---	---	536	789	1341	1781
	1500	---	---	447	657	1118	1484
	1200	---	---	358	526	894	1187
	1000	---	---	298	438	745	990
25	1800	---	---	472	716	1217	1616
	1500	---	---	393	597	1014	1347
	1200	---	---	315	477	811	1077
	1000	---	---	2652	398	676	898
28	1800	190	320	417	631	1054	1400
	1500	158	267	348	526	878	1166
	1200	127	213	278	421	703	933
	1000	106	178	232	351	586	778
31,5	1800	173	280	390	570	956	1270
	1500	145	233	325	475	797	1058
	1200	116	187	260	380	638	847
	1000	96	156	217	317	531	705
35,5	1800	155	259	345	503	827	1098
	1500	129	216	287	419	689	915
	1200	103	173	230	335	551	732
	1000	86	144	192	279	459	610
40	1800	135	220	306	447	750	996
	1500	113	183	255	373	625	830
	1200	90	147	204	298	500	664
	1000	75	122	170	248	417	553
45	1800	121	204	271	394	667	886
	1500	101	170	225	328	556	739
	1200	81	136	180	263	445	591
	1000	67	113	150	219	371	492
50	1800	111	173	237	357	606	804
	1500	92	144	198	298	505	670
	1200	74	115	158	238	404	536
	1000	61	96	132	199	336	447
56	1800	99	160	210	315	533	708
	1500	82	133	175	263	444	590
	1200	66	107	140	210	355	472
	1000	55	89	117	175	296	393
63	1800	86	140	192	276	471	626
	1500	72	116	160	230	393	521
	1200	58	93	128	184	314	417
	1000	48	78	106	153	262	348
71	1800	77	129	171	255	430	571
	1500	64	108	143	213	358	476
	1200	51	86	114	170	287	380
	1000	43	72	95	142	239	317
80	1800	70	113	153	227	383	508
	1500	58	94	127	189	319	423
	1200	47	75	102	152	255	339
	1000	39	63	85	126	213	282
90	1800	62	103	134	201	---	---
	1500	51	86	111	168	---	---
	1200	41	69	89	134	---	---
	1000	34	57	74	112	---	---
100	1800	54	89	---	---	---	---
	1500	45	75	---	---	---	---
	1200	36	60	---	---	---	---
	1000	30	50	---	---	---	---
112	1800	50	82	---	---	---	---
	1500	42	69	---	---	---	---
	1200	33	55	---	---	---	---
	1000	28	46	---	---	---	---

REDUCTORES INDUSTRIALES

INDUSTRIAL GEAR UNITS

TABLA DE MEDIDAS - SERIE TPB
OVERALL DIMENSIONS - TPB SERIES

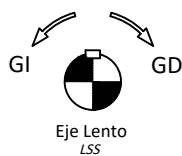
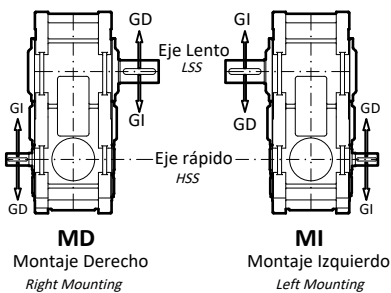


Modelo Model	$\phi d1$ m6		l1	l3	$\phi d1$ m6		l1	l3	$\phi d1$ m6		l1	l3	G1	G3
	std	ref			std	ref			std	ref				
TPB 280	iN=31.5.....56				iN=63.....80				iN=90.....112				185	250
	45	50	80	80	35	40	60	60	28	30	50	50		
TPB 320	iN=31.5.....56				iN=63.....80				iN=90.....112				230	300
	60	65	125	105	45	50	100	80	32	35	80	60		
TPB 360	iN=25.....45				iN=50.....63				iN=71.....90				255	330
	70	80	120	120	50	55	80	80	42	45	70	70		

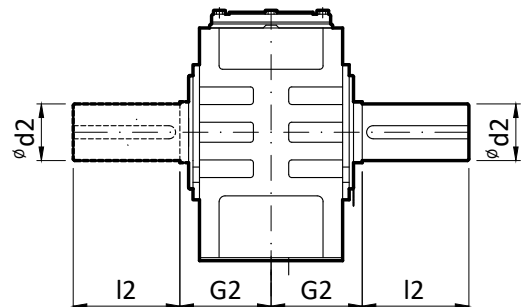
Modelo Model	d2 n6	l2	G2	E	a	A1	A2	A3	A4	b	B1	B2
TPB 280	130	250	195	540	950	157	160	180	100	300	245	205
TPB 320	160	300	235	630	1100	182	190	205	120	370	295	240
TPB 360	170	300	270	705	1200	218	220	255	150	430	325	280

Modelo Model	c	d6	h_{-1}^0	H	m1	m3	n1	n2	s	Peso Weight (Kg)	Aceite Oil (lts)
TPB 280	35	75	280	582	710	260	120	190	24	625	32
TPB 320	40	90	320	662	810	320	145	205	28	1020	49
TPB 360	50	100	380	782	870	370	165	180	35	1400	85

Configuración Setting



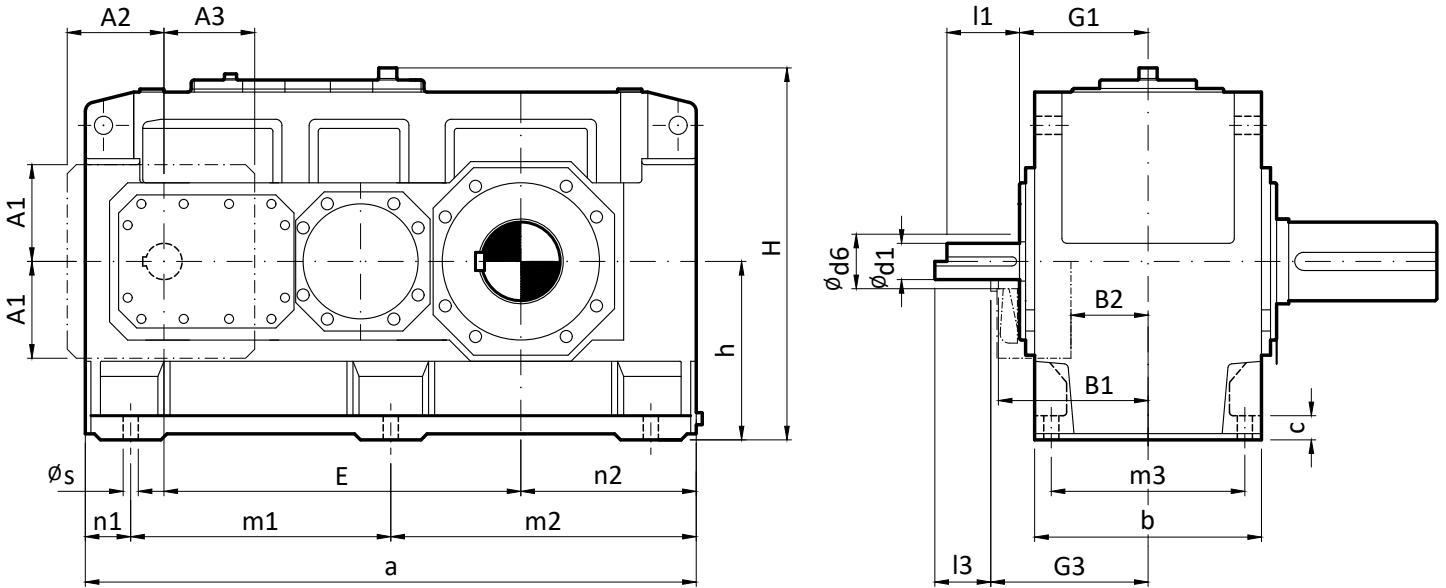
GD : Giro Horario
GD : Clockwise Rotation
GI : Giro Antihorario
GI : Counterclockwise Rotation



REDUCTORES INDUSTRIALES

INDUSTRIAL GEAR UNITS

TABLA DE MEDIDAS - SERIE TPB
OVERALL DIMENSIONS - TPB SERIES

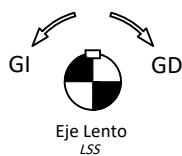
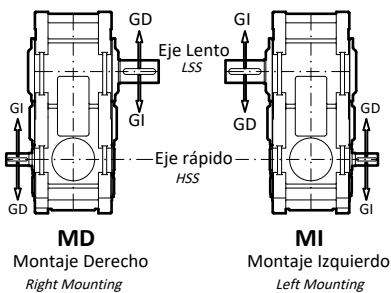


Modelo Model	ød1 m6		l1	l3	ød1 m6		l1	l3	ød1 m6		l1	l3	G1	G3
	std	ref			std	ref			std	ref				
TPB 400	iN=22.4.....45				iN=50.....63				iN=71.....90				310	385
	85	90	160	130	60	65	135	105	50	55	110	80		
TPB 450	iN=22.4.....45				iN=50.....63				iN=71.....90				350	420
	100	---	200	165	75	---	140	105	60	---	140	105		
TPB 500	iN=22.4.....45				iN=50.....63				iN=71.....90				380	450
	100	---	200	165	75	---	140	105	60	---	140	105		

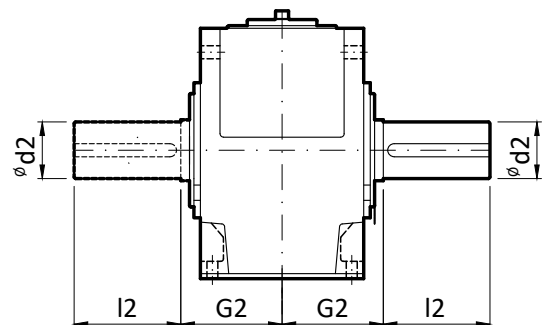
Modelo Model	d2 n6	l2	G2	E	a	A1	A2	A3	b	B1	B2	c
TPB 400	200	350	335	820	1395	225	225	212	550	380	195	60
TPB 450	230	410	380	987	1680	270	265	252	625	415	205	70
TPB 500	250	410	415	1035	1770	270	265	252	690	445	235	80

Modelo Model	d6	h ₋₁ ⁰	H	m1	m2	m3	n1	n2	s	Peso Weight (Kg)	Aceite Oil (lts)
TPB 400	120	440	900	597.5	597.5	475	100	305	35	2295	160
TPB 450	150	500	1000	720	720	535	120	365	42	3475	235
TPB 500	150	550	1110	750	750	600	135	390	42	4560	305

Configuración Setting



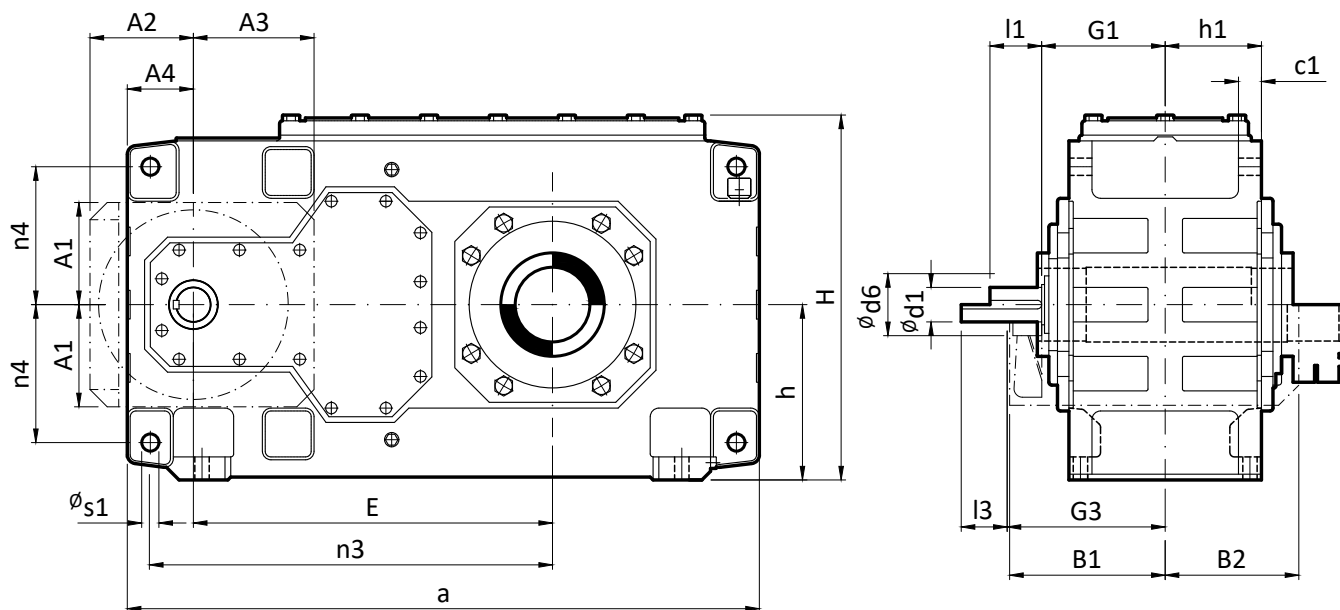
GD : Giro Horario
GD : Clockwise Rotation
GI : Giro Antihorario
GI : Counterclockwise Rotation



REDUCTORES INDUSTRIALES

INDUSTRIAL GEAR UNITS

TABLA DE MEDIDAS - SERIE TPB-Hu
OVERALL DIMENSIONS - TPB-Hu SERIES

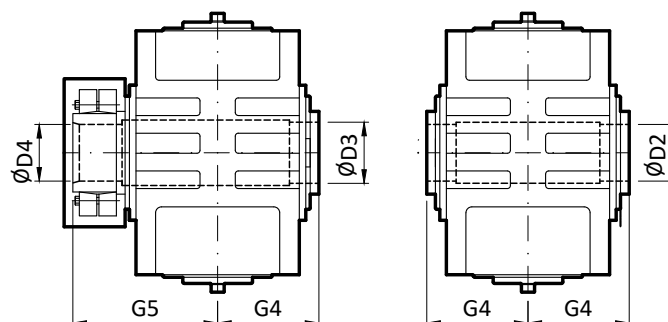
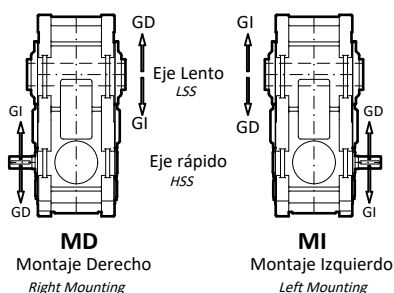


Modelo Model	ϕ_{d1} m6		l1	l3	ϕ_{d1} m6		l1	l3	ϕ_{d1} m6		l1	l3	G1	G3
	std	ref			std	ref			std	ref				
TPB 280	iN=31.5.....56				iN=63.....80				iN=90.....112				185	250
	45	50	80	80	35	40	60	60	28	30	50	50		
TPB 320	iN=31.5.....56				iN=63.....80				iN=90.....112				230	300
	60	65	125	105	45	50	100	80	32	35	80	60		
TPB 360	iN=25.....45				iN=50.....63				iN=71.....90				255	330
	70	80	120	120	50	55	80	80	42	45	70	70		

Modelo Model	D2 H7	D3 H7	D4 H7	G4	G5	E	a	A1	A2	A3	A4	B1
TPB 280	125	130	130	195	285	540	950	157	160	180	100	245
TPB 320	150	155	150	235	350	630	1100	182	190	205	120	295
TPB 360	165	170	165	270	400	705	1200	218	220	255	150	325

Modelo Model	B2	c1	d6	h_{-1}^0	h1	H	n3	n4	s1 H9	Peso Weight (Kg)	Aceite Oil (lts)
TPB 280	205	36	75	280	150	582	605	215	28	625	32
TPB 320	240	45	90	320	185	662	710	245	36	1020	49
TPB 360	280	54	100	380	215	782	805	300	40	1400	85

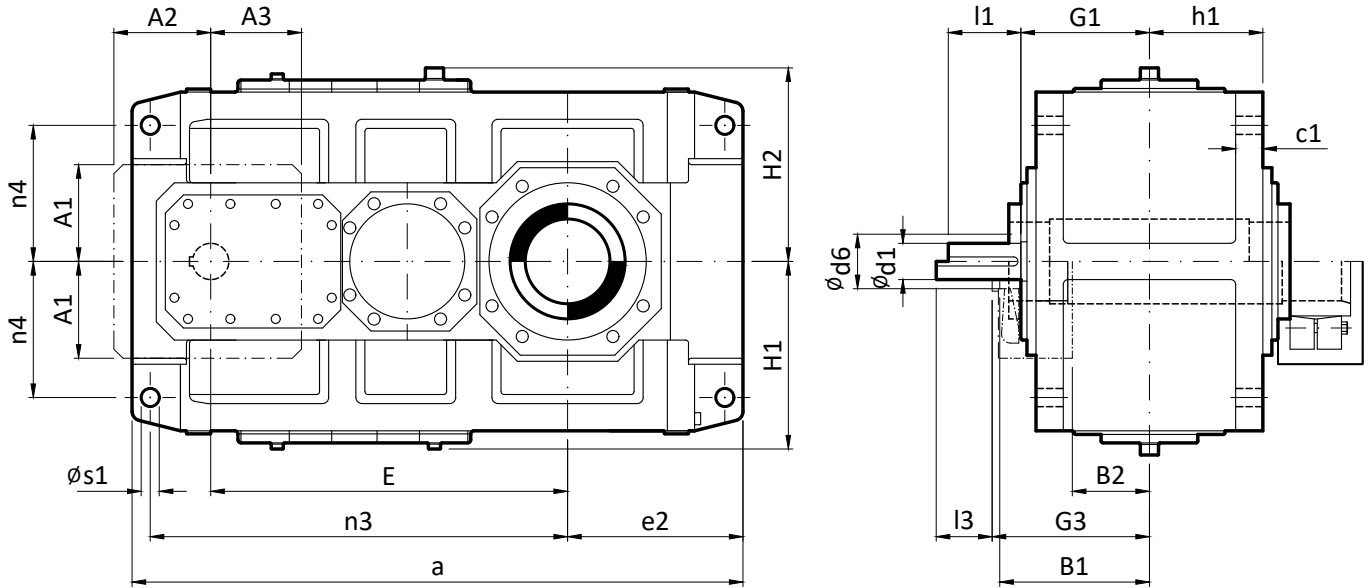
Configuración Setting



REDUCTORES INDUSTRIALES

INDUSTRIAL GEAR UNITS

TABLA DE MEDIDAS - SERIE TPB-Hu
 OVERALL DIMENSIONS - TPB-Hu SERIES

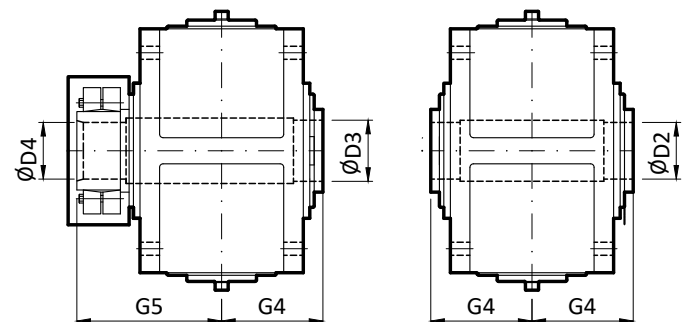
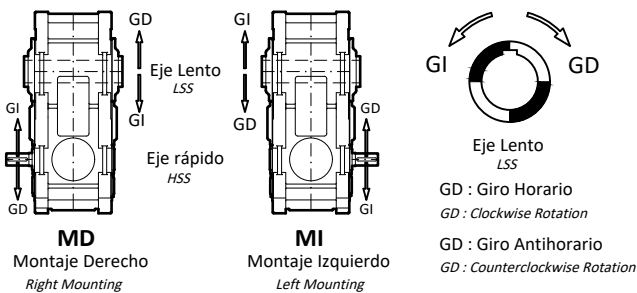


Modelo Model	ød1 m6		l1	l3	ød1 m6		l1	l3	ød1 m6		l1	l3	G1	G3
	std	ref			std	ref			std	ref				
TPB 400	iN=22.4.....45				iN=50.....63				iN=71.....90				310	385
	85	90	160	130	60	65	135	105	50	55	110	80		
TPB 450	iN=22.4.....45				iN=50.....63				iN=71.....90				350	420
	100	---	200	165	75	---	140	105	60	---	140	105		
TPB 500	iN=22.4.....45				iN=50.....63				iN=71.....90				380	450
	100	---	200	165	75	---	140	105	60	---	140	105		

Modelo Model	D2 H7	D3 H7	D4 H7	G4	G5	E	a	A1	A2	A3	B1	B2	c1
TPB 400	190	195	190	335	480	820	1395	225	225	212	380	195	61±2
TPB 450	230	235	230	380	550	987	1680	270	265	252	415	205	72±2
TPB 500	250	260	250	415	600	1035	1770	270	265	252	445	235	81±2

Modelo Model	d6	h1	H1	H2	n3	n4	s1 H9	Peso Weight (Kg)	Aceite Oil (lts)
TPB 400	120	272.5	450	460	940	340	48	2155	125
TPB 450	150	310	490	500	1135	375	55	3260	190
TPB 500	150	340	555	560	1175	425	55	4250	240

Configuración Setting



POTENCIAS MECANICAS (kW) Y RELACIONES NOMINALES
POWER RATING (kW) AND NOMINAL RATIO

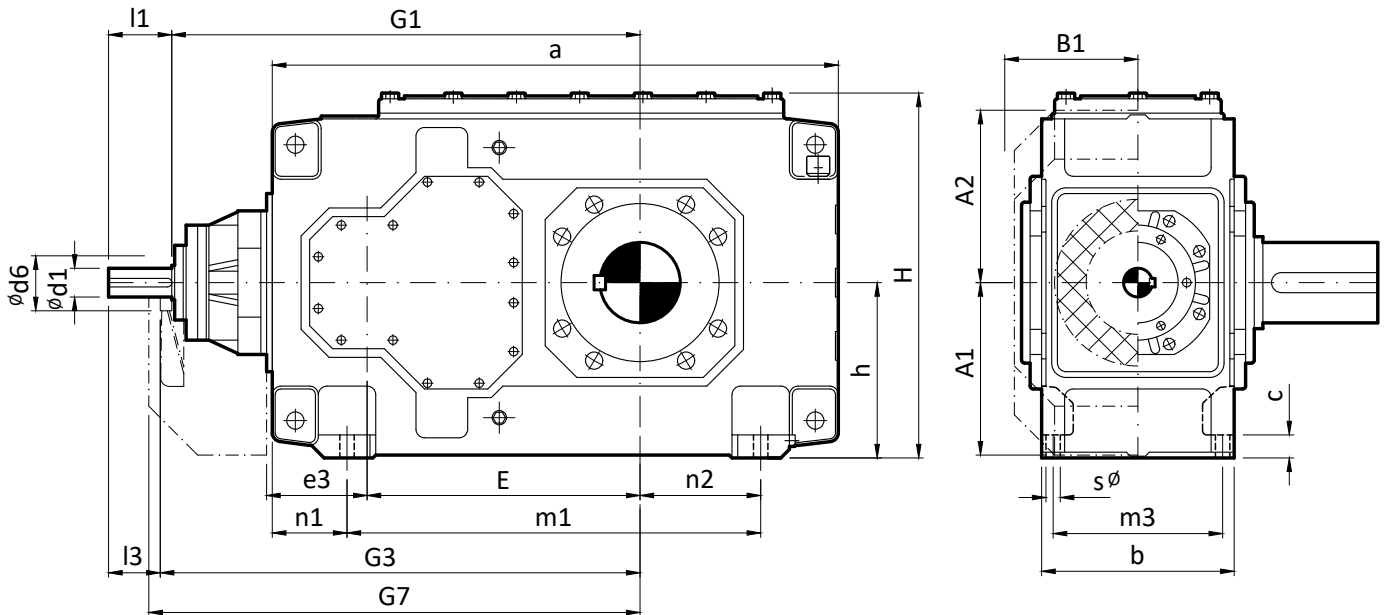
Triple Reducción -Entrada Cónica

Triple Reduction - Bevel Helical Gear Units

Relaciones Nominales Nominal Ratio	n1 (r.p.m.)	Modelo					
		Model					
		KTPB 280	KTPB 320	KTPB 360	KTPB 400	KTPB 450	KTPB 500
		B3 08	B3-10	B3-11	B3-13	B3-15	B3-17
12,5	1800	---	---	793	1204	2089	3134
	1500	---	---	661	1003	1740	2612
	1200	---	---	529	802	1392	2090
	1000	---	---	441	669	1160	1741
14	1800	---	---	765	1134	1935	2809,0
	1500	---	---	638	945	1613	2341
	1200	---	---	510	756	1290	1873
	1000	---	---	425	630	1075	1561
16	1800	267	454	739	1034	1787	2545
	1500	223	378	616	861	1489	2121
	1200	178	303	493	689	1191	1697
	1000	149	252	410	574	993	1414
18	1800	254	418	676	932	1636	2296
	1500	211	348	563	777	1363	1914
	1200	169	278	450	621	1091	1531
	1000	141	232	375	518	909	1276
20	1800	260	400	609	885	1534	1924
	1500	217	333	507	737	1279	1604
	1200	173	267	406	590	1023	1283
	1000	144	222	338	492	852	1069
22,4	1800	232	372	538	800	1315	1840
	1500	193	310	449	667	1096	1533
	1200	155	248	359	533	877	1227
	1000	129	207	299	444	731	1022
25	1800	212	341	489	715	1193	1542
	1500	176	284	408	596	994	1285
	1200	141	227	326	477	796	1028
	1000	118	189	272	397	663	857
28	1800	191	324	433	646	1036	1446
	1500	160	270	361	538	863	1205
	1200	128	216	288	431	691	964
	1000	106	180	240	359	576	803
31,5	1800	169	267	398	546	940	1212
	1500	141	223	332	455	783	1010
	1200	113	178	265	364	627	808
	1000	94	148	221	304	522	673
35,5	1800	153	254	352	494	841	1141
	1500	128	212	293	412	700	951
	1200	102	170	235	329	560	761
	1000	85	141	196	274	467	634
40	1800	134	216	305	443	763	957
	1500	112	180	254	369	636	797
	1200	89	144	203	296	508	638
	1000	74	120	169	246	424	531
45	1800	121	206	270	401	672	913
	1500	101	172	225	334	560	761
	1200	81	137	180	267	448	609
	1000	67	114	150	223	374	507
50	1800	109	171	244	355	610	765
	1500	91	142	203	296	508	638
	1200	72	114	163	236	407	510
	1000	60	95	136	197	339	425
56	1800	98	163	216	321	545	683
	1500	82	135	180	267	454	570
	1200	66	108	144	214	363	456
	1000	55	90	120	178	303	380
63	1800	87	137	193	286	494	620
	1500	73	114	161	239	412	517
	1200	58	91	128	191	330	413
	1000	48	76	107	159	275	344
71	1800	79	130	165	260	434	544
	1500	66	108	138	216	361	453
	1200	53	87	110	173	289	363
	1000	44	72	92	144	241	302
80	1800	70	116	145	220	---	---
	1500	59	97	121	184	---	---
	1200	47	77	97	147	---	---
	1000	39	65	81	122	---	---
90	1800	62	101	---	---	---	---
	1500	52	84	---	---	---	---
	1200	42	67	---	---	---	---
	1000	35	56	---	---	---	---

REDUCTORES INDUSTRIALES INDUSTRIAL GEAR UNITS

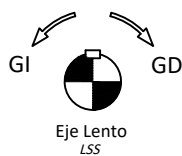
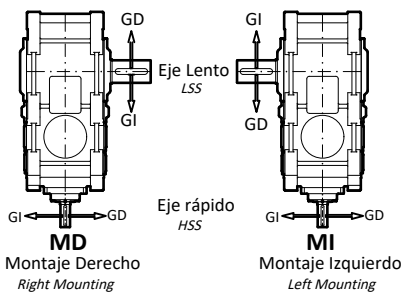
TABLA DE MEDIDAS - SERIE KTPB
OVERALL DIMENSIONS - KTPB SERIES



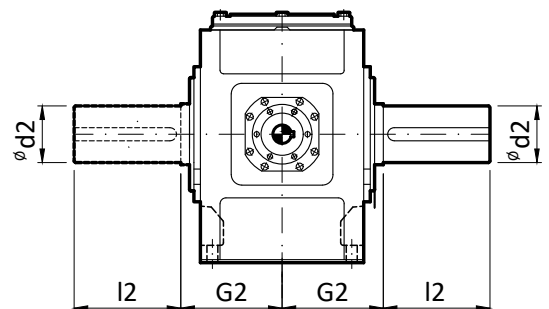
Modelo Model	$\phi d1$ m6		l1	l3	$\phi d1$ m6		l1	l3	G1	G3
	std	ref			std	ref				
KTPB 280	iN=16.....56				iN=63.....90				735	755
	45	50	100	80	35	40	80	60		
KTPB 320	iN=16.....56				iN=63.....90				850	880
	55	60	110	80	40	50	100	70		
KTPB 360	iN=12.5.....45				iN=50.....71				960	990
	70	75	135	105	50	60	110	80		

Modelo Model	d2 n6	l2	G2	G7	E	e3	a	A1	A2	b	B1	c
KTPB 280	130	250	195	765	430	160	890	275	275	300	193	35
KTPB 320	160	300	235	895	500	185	1025	315	325	370	231	40
KTPB 360	170	300	270	1010	545	225	1105	370	385	430	263	50

Modelo Model	d6	h_{-1}^0	h1	H	m1	m3	n1	n2	s	Peso Weight (Kg)	Aceite Oil (lts)
KTPB 280	165	280	150	582	650	260	120	190	24	635	30
KTPB 320	175	320	185	662	735	320	145	205	28	1020	45
KTPB 360	190	380	215	782	775	370	165	180	35	1455	71



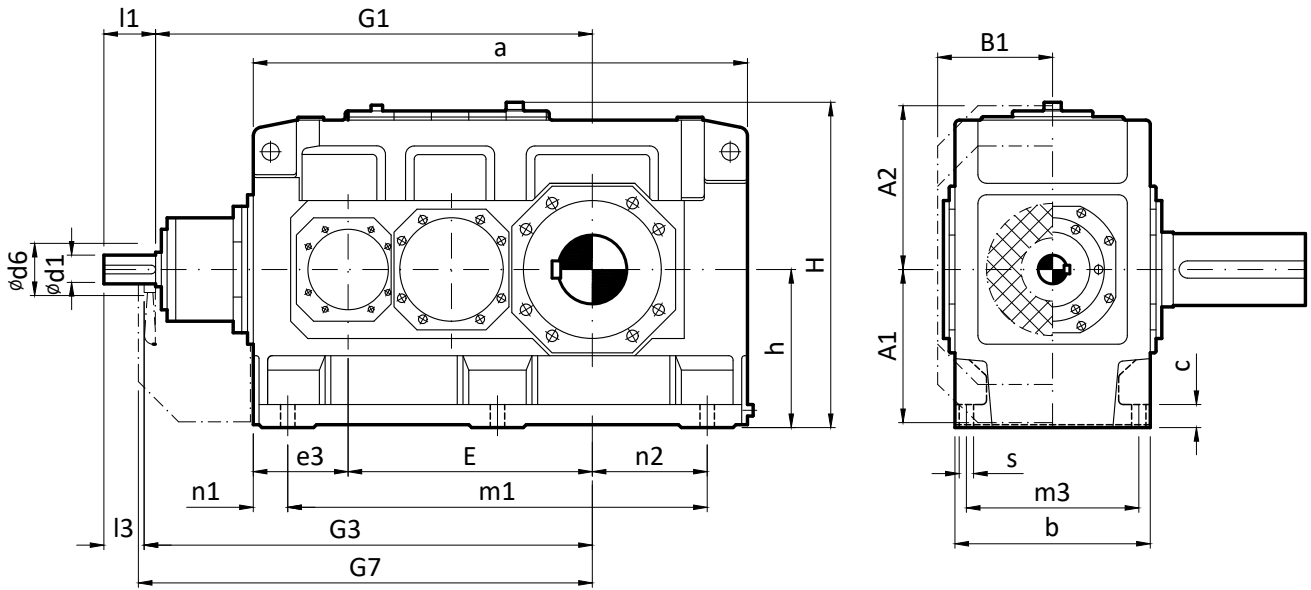
GD : Giro Horario
GD : Clockwise Rotation
GD : Giro Antihorario
GD : Counterclockwise Rotation



REDUCTORES INDUSTRIALES

INDUSTRIAL GEAR UNITS

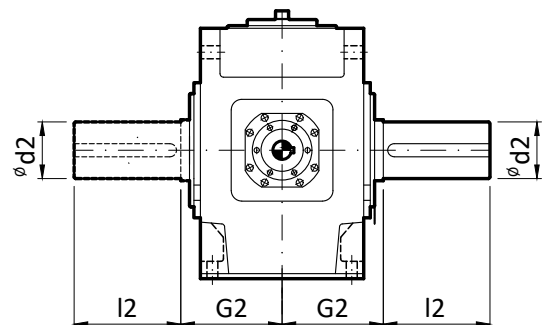
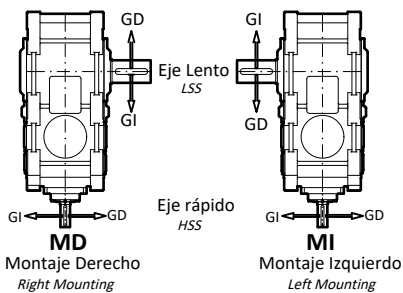
TABLA DE MEDIDAS - SERIE KTPB
OVERALL DIMENSIONS - KTPB SERIES



Modelo Model	ød1 m6		l1	l3	ød1 m6		l1	l3	G1	G3
	std	ref			std	ref				
KTPB 400	iN=12.5.....45				iN=50.....71				1125	1160
	80	85	165	130	60	70	140	105		
KTPB 450	iN=12.5.....45				iN=50.....71				1367	1402
	90	95	165	130	70	85	140	105		
KTPB 500	iN=12.5.....45				iN=50.....71				1560	1600
	110	---	205	165	80	---	170	130		

Modelo Model	d2 n6	l2	G2	G7	E	e3	a	A1	A2	b	B1	c
KTPB 400	200	350	335	1180	635	265	1290	425	435	550	325	60
KTPB 450	230	410	380	1420	762	320	1550	485	520	625	365	70
KTPB 500	250	410	415	1620	860	370	1740	535	570	690	395	80

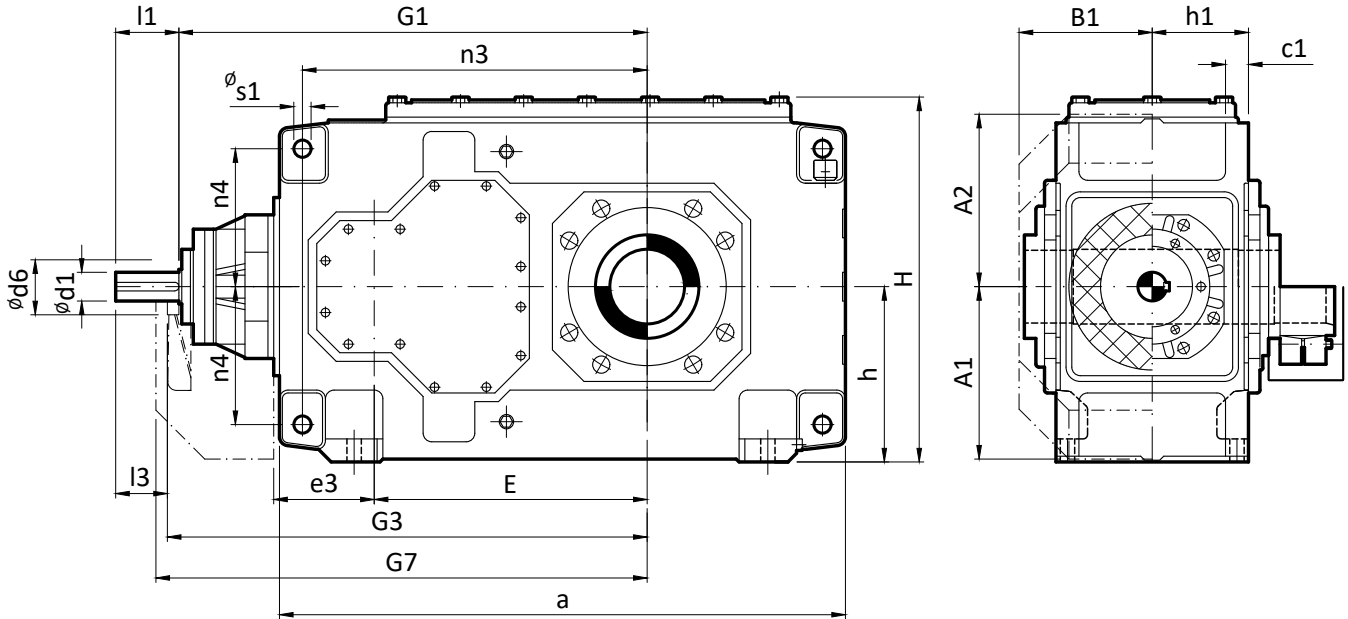
Modelo Model	d6	h ₋₁ ⁰	H	m1	m3	n1	n2	s	Peso Weight (kg)	Aceite Oil (lts)
KTPB 400	210	440	900	545	475	100	305	35	2380	130
KTPB 450	210	500	1000	655	535	120	365	42	3730	210
KTPB 500	230	550	1110	735	600	135	390	42	4990	290



REDUCTORES INDUSTRIALES

INDUSTRIAL GEAR UNITS

TABLA DE MEDIDAS - SERIE KTPB-Hu
 OVERALL DIMENSIONS - KTPB-Hu SERIES

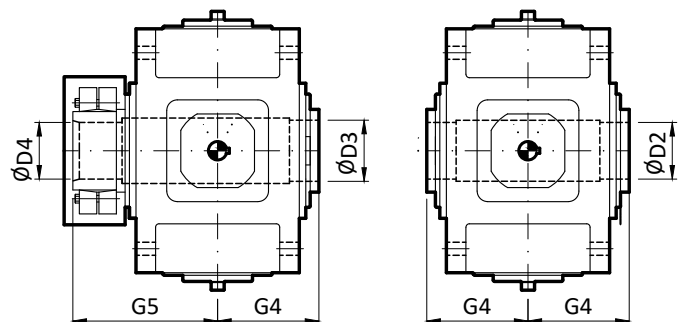
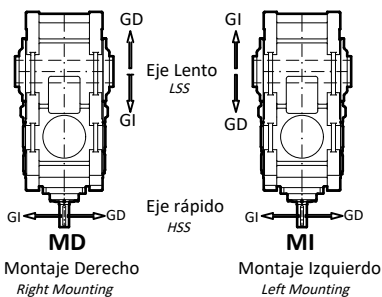


Modelo Model	ød1 m6		l1	l3	ød1 m6		l1	l3	G1	G3
	std	ref			std	ref				
KTPB 280	iN=16.....56				iN=63.....90				735	755
	45	50	100	80	35	40	80	60		
KTPB 320	iN=16.....56				iN=63.....90				850	880
	55	60	110	80	40	50	100	70		
KTPB 360	iN=12.5.....45				iN=50.....71				960	990
	70	75	135	105	50	60	110	80		

Modelo Model	D2 H7	D3 H7	D4 H7	G4	G5	G7	E	e3	a	A1	A2	b
KTPB 280	125	130	130	195	285	765	430	160	890	275	275	300
KTPB 320	150	155	150	235	350	895	500	185	1025	315	325	370
KTPB 360	165	170	165	270	400	1010	545	225	1105	370	385	430

Modelo Model	B1	c1	d6	h ₋₁ ⁰	h1	H	n3	n4	s1 H9	Peso Weight (Kg)	Aceite Oil (lts)
KTPB 280	193	36	165	280	150	582	545	215	28	635	30
KTPB 320	231	45	175	320	185	662	635	245	36	1020	45
KTPB 360	263	54	190	380	215	782	710	300	40	1455	71

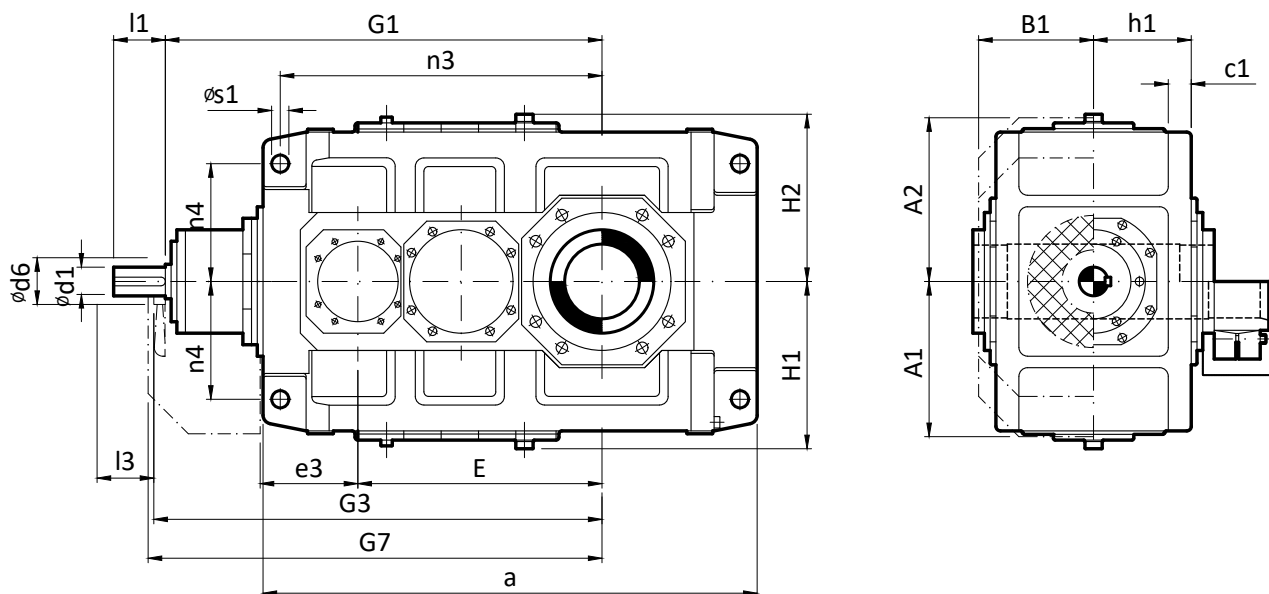
Configuración Setting



REDUCTORES INDUSTRIALES

INDUSTRIAL GEAR UNITS

TABLA DE MEDIDAS - SERIE KTPB-Hu
 OVERALL DIMENSIONS - KTPB-Hu SERIES

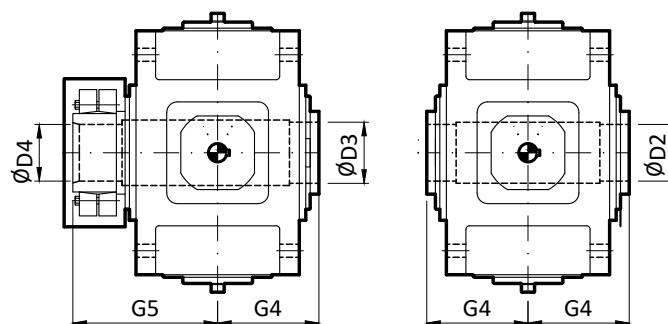
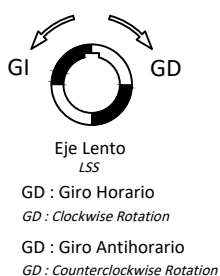
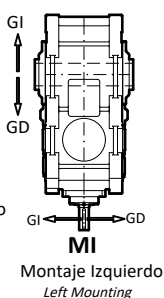
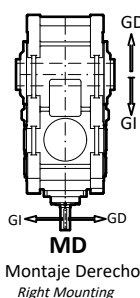


Modelo Model	ød1 m6		l1	l3	ød1 m6		l1	l3	G1	G3
	std	ref			std	ref				
KTPB 400	iN=12.5.....45				iN=50.....71				1125	1160
	80	85	165	130	60	70	140	105		
KTPB 450	iN=12.5.....45				iN=50.....71				1367	1402
	90	95	165	130	70	85	140	105		
KTPB 500	iN=12.5.....45				iN=50.....71				1560	1600
	110	---	205	165	80	---	170	130		

Modelo Model	D2 H7	D3 H7	D4 H7	G4	G5	G7	E	e3	a	A1	A2	B1
KTPB 400	190	195	190	335	480	1180	635	265	1290	425	435	325
KTPB 450	230	235	230	380	550	1420	762	320	1550	485	520	365
KTPB 500	250	260	250	415	600	1620	860	370	1740	535	570	395

Modelo Model	c1	d6	h1	H1	H2	n3	n4	s1 H9	Peso Weight (Kg)	Aceite Oil (lts)
KTPB 400	61±2	210	272.5	450	460	835	340	35	2260	130
KTPB 450	72±2	210	310	490	500	1005	375	42	3540	210
KTPB 500	81±2	230	340	555	560	1145	425	42	4760	290

Configuración Setting



CARGAS RADIALES Y AXIALES ADMISIBLES EN EL EJE DE SALIDA **

OUTPUT SHAFT OVERHUNG LOAD RATING **

TAMAÑO * UNIT SIZE *		VELOCIDAD DE SALIDA (r.p.m.) OUTPUT SPEED (r.p.m.)		
	< 15	16.....70	71.....300
280	Carga radial (kg)	4000	3500	3000
	<i>Radial load (lb)</i>	9195	8046	6897
	Carga axial (kg)	1000	875	750
	<i>Thrust (lb)</i>	2299	2011	1724
320	Carga radial (kg)	6000	5000	4500
	<i>Radial load (lb)</i>	13793	11494	10345
	Carga axial (kg)	1500	1250	1125
	<i>Thrust (lb)</i>	3448	2874	2586
360	Carga radial (kg)	8500	7000	6400
	<i>Radial load (lb)</i>	19540	16092	14713
	Carga axial (kg)	2125	1750	1600
	<i>Thrust (lb)</i>	4885	4023	3678
400	Carga radial (kg)	18500	15000	14000
	<i>Radial load (lb)</i>	42529	34483	32184
	Carga axial (kg)	4625	3750	3500
	<i>Thrust (lb)</i>	10632	8621	8046
450	Carga radial (kg)	19000	16500	15000
	<i>Radial load (lb)</i>	43678	37931	34483
	Carga axial (kg)	4750	4125	3750
	<i>Thrust (lb)</i>	10920	9483	8621
500	Carga radial (kg)	26500	22000	20500
	<i>Radial load (lb)</i>	60920	50575	47126
	Carga axial (kg)	6625	5500	5125
	<i>Thrust (lb)</i>	15230	12644	11782

* Nota 1 : Valido para lineas DPB , TPB , CPB , KDPB y KTPB.

* Note 1 : Valid for types DPB , TPB , CPB , KDPB and KTPB.

** Nota 2 : Validas para cargas aplicadas en el centro de la punta de eje.

** Note 2 : For loads applied on the middle of the end shaft.